

PASSWORD FINGERPRINT DRAWER INSTALLATION INSTRUCTION

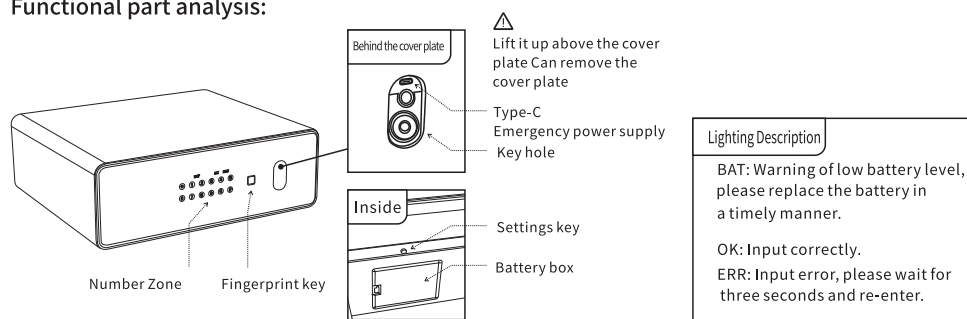
Thank you for using this product.
Please read the product
manual carefully before installation

**Note: The default password
at the factory is 1234.
Please do not keep the spare
key in the storage drawer**



Product Introduction

Functional part analysis:



Basic parameters

Model Name: SH8257 Password fingerprint drawer
Working power supply: AA battery X4
Working voltage: 3.8V~6.5V
Working temperature: -20°C~+55°C
Number of Passwords: 10 Password length: 4-6 digits
Number of fingerprints: 40

Standby current: 30~50uA
Emergency power supply: 5V Type-C (No charging function)
Relative humidity: 30%RH~85%RH

Number of administrators: 3 (the first three are entered as administrators who do not distinguish between passwords and fingerprints)

Accessories List



Operating instructions

• Opening method:

The first time opening a drawer requires a key or a portable power bank. (Press above the cover to remove the cover)

Password unlocking: Touch the numeric area to wake up the system, enter the initial password 1234, and press "*" to confirm.

Fingerprint unlocking: Initial fingerprint unlocking, any fingerprint unlocking.

• Add User: (Change Password and Add Fingerprint)

(1) Please reset before entering the user, and only after changing the new password can fingerprint entry be performed.

(2) The initial factory password is 1234. When using it for the first time, enter "*" 1234" and press "*" to confirm.

(3) The first three registered users in the system are administrators and do not distinguish between fingerprints and passwords. Adding other users requires administrator authorization.

• Input steps

Short press the reset button > the buzzer beeps briefly > enter the administrator password, and the verification is successful; The buzzer prompts two tones of "DORE", the OK light flashes, > enter the new password (4-6 digits, press the "*" key to confirm), enter the new password again, press the "*" key to confirm (enter password) or press the fingerprint four times (enter fingerprint).

(If the password is entered incorrectly, you can press the * key to clear it and then re-enter it)

Input successful: The "OK" light will light up for one second and enter sleep mode.

Verification failed: "ERR" light flashes, entering sleep mode.

Tips

(1) Support locking function: if the password is entered incorrectly 5 times in a row, the ERR light will remain on for 8 seconds, and the system will be locked for 60 seconds; During the lock period, the system does not respond to any operations. After waiting for 60 seconds, the system will return to normal.

(2) Supports virtual password, with a maximum of 20 valid inputs. Example: If the correct password is "23456", you can enter 946465212345679456152

(3) After changing the password or entering the fingerprint, please verify the password/fingerprint once before closing the drawer.

Restore factory settings

Press and hold the reset button for more than 10 seconds. After two short beeps, release the button to clear the system. After completion, press and hold once, the OK light will light up for one second, and the system will enter sleep mode.

