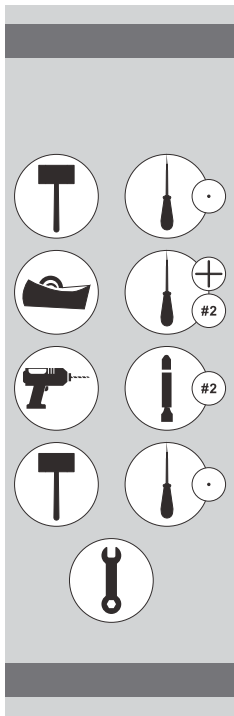
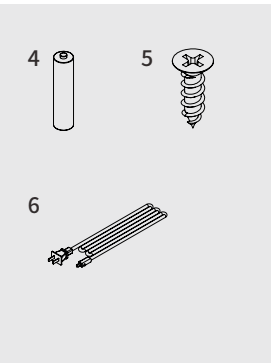
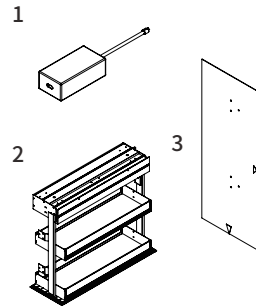


ELECTRIC LIFTING BASKET INSTALLATION MANUAL



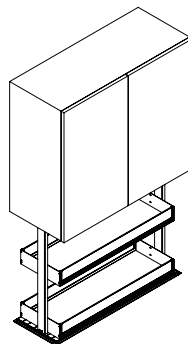
Accessories list		
S/N	Name	Quantity
1	Adapter	1
2	Basket	1
3	Paper Card	1
4	Battery	3
5	Screw	12
6	Power line	8

Product size	
D/Size D	Size of product
600	564 x 264x655mm
700	664 x 264x655mm
800	764 x 264x655mm
900	864 x 264x655mm



Attention:

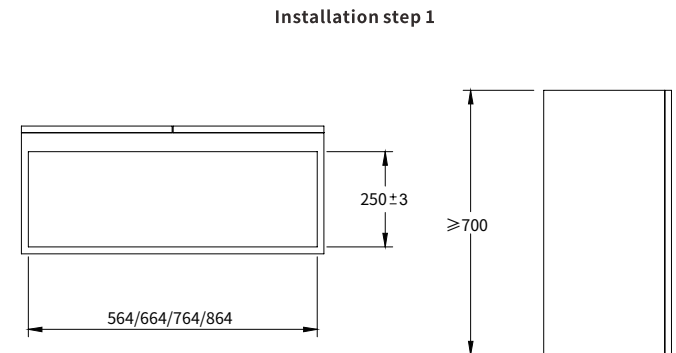
1. This product is suitable for thickness 16-18mm cabinet
2. Suitable for standard cabinet with depth $\geq 280\text{mm}$ and height $\geq 700\text{mm}$



一、Installation Steps

Installation step 1

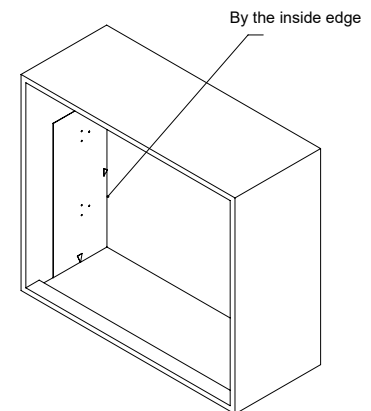
Cabinet size as picture:



Installation step 2

Put the paper card into cabinet and punch hole

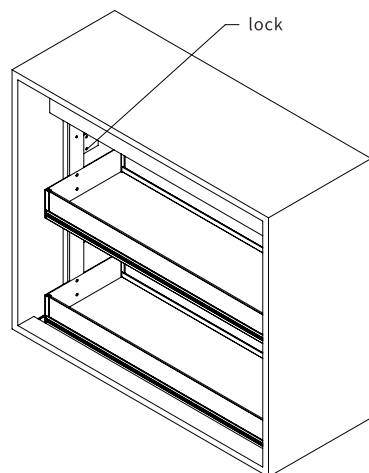
Installation step 2



Installation step 3

lock the screws to
fix the basket

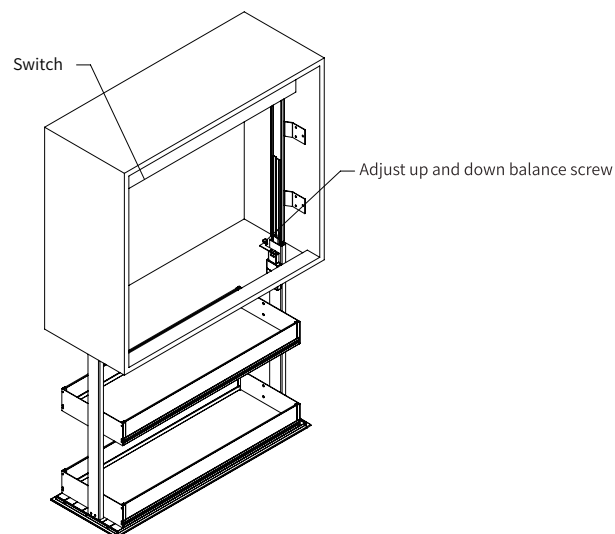
Installation step 3



Installation step 4

After connect to the
power then turn on the
switch, you can use
touch control.

Installation step 4



二、 Operation Steps

- 1.This product is suitable for touch and voice control operation.
- 2.After the power is turned on, press the switch on the right side of the main frame and the reminding voice will come out, indicating that the power is turned on.
3. The touch bar is under the basket. Touch it once to descend ,touch again to stop, touch once more to rise.
4. The voice control operation mode is, the slogan "Tally, Tally" wakes up the machine; the "cabinet falls" or "start to fall", the basket falls; the "cabinet rises" or "starts to rise" and the basket rises; "turn on mute", basket is silent mode; "Lighting off", basket lighting is off.
5. Voice control is an auxiliary function, which is greatly affected by noise,and the main function is touch sensor.
6. If forget to turn off and there is no operation, it will automatically turn off in 5minutes.

三、 Precautions

- 1.Prohibit unauthorized disassembly,repair and alteration. Avoid product damage and personal injury.
- 2.Can Not bear more than 15 kg of goods.
- 3.Do Not flush, easy to cause short circuits and other failures. Do not store wet items, kitchen utensils need to be dry before putting.
- 4.The height of the upper storage should not exceed 230mm
- 5.Do not put in or take out any items when machine is working,avoid personal injury.

四、 Specification

Model	PO6120/600/700/800/900 mm
Voltage	220V
Electric	100W
Running time	12seconds
Lifting distance	590mm